

3D Free Angle IR Dome Camera

CM-D1100

CM-D1101

Feature

- Vari-Focal Adjustable Externally (CM-D1100)
- Distance Viewing for 20M and 10M
- Various LED Angle Combination: Uniform IR Light Distribution
- Double Glass: Effectively Reducing the Internal Reflection
- Aluminum Alloy Housing for Better Heat dissipation
- IP65 Weather Proof Approved (CM-D1100)



CM-D1100

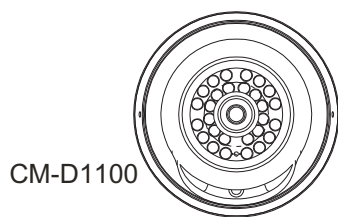


CM-D1101

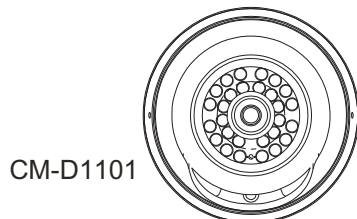
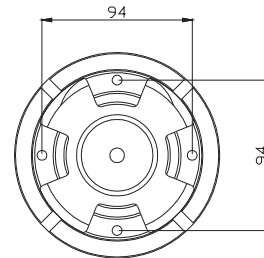
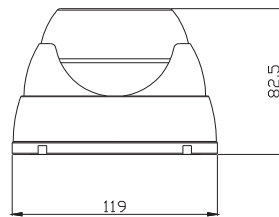
Specification

General	CM-D1100	CM-D1101
Pick up device	1/3" interline transfer CCD	
Total Pixels	NTSC:537(H) x 505(V) / PAL:537(H) x 592(V)	
Effective Pixels	NTSC:510(H) x 492(V) / PAL:500(H) x 582(V)	
Resolution	With 420 TV lines	With 380 TV lines
Sync. System	2:1 Internal	
Scanning System	NTSC: 525 Lines / 60 Fields ; PAL: 625 Lines / 50 Fields	
S/N Ratio	More than 48 dB	
Electronic Shutter	Auto 1/60 (1/50) ~1/100,000 secretary.	
Min. Illumination	0.3lux color / F2.0	0.4 lux color / F2.0
Video Output	Composite 1.0 Vp-p / 75 ohm	
IR Distance	20M(28pcs IR LED)	10M (14pcs IR LED)
IR Trigger	3.1lux / 3.7lux IR ON / OFF	2.6lux / 2.7lux IR ON / OFF
Lens Type	Board Lens 4.3, 6mm	
Electrical		
DC power Source	DC12V / 1A Adaptor	
Power Consumption	5.9W(Max) / 3.5W (Max)	
Current	490mA (Max) / 290mA (Max)	
Weight	N.W./G.W.: 0.76kg / 0384kg	N.W./G.W.: 0.39kg / 0.454kg
Dimension	82.5mm (H) x 119 (Diameter)	69mm (H) x 94 (Diameter)
Operation Temperature	-10 to 50 °C (14 to 122 °F)	
Storage Temperature	-20 to 70 °C (-4 to 158 °F)	
IP Certificate	IP65 /IP66	

Dimension



CM-D1100



CM-D1101

